



LAKESIDE DEVELOPMENT



Notes:

- All lots are located in the R-1A Residence District Regulations of Polk City.
- Lots will be ready to build on by July 2007.
- Minimum home sizes are as follows: 1,250 square feet (not including the basement)
- Homebuilder is responsible for all sidewalks per City of Polk City Code.

LOT PRICING

LOT #	SQUARE FEET	PRICE	DESCRIPTION	FRONT WIDTH AT SETBACK
1	14,061	SOLD	Standard	Corner Lot
2	10,990	\$45,900	Standard	70
3	10,990	SOLD	Standard	70
4	10,990	\$45,900	Standard	70
5	10,990	\$45,900	Standard	70
6	10,990	\$45,900	Standard	70
7	10,900	\$45,900	Standard	70
8	14,056	\$46,900	Standard	Corner Lot
9	13,877	\$46,900	Standard	Corner Lot
10	10,658	\$46,900	Standard	70
11	9,800	\$46,900	Standard	Cul-de-sac Lot
12	11,947	SOLD	Standard	Cul-de-sac Lot
13	17,750	\$52,900	Standard	Cul-de-sac Lot
14	13,882	\$51,900	Standard	Cul-de-sac Lot
15	11,537	\$47,900	Standard	Cul-de-sac Lot

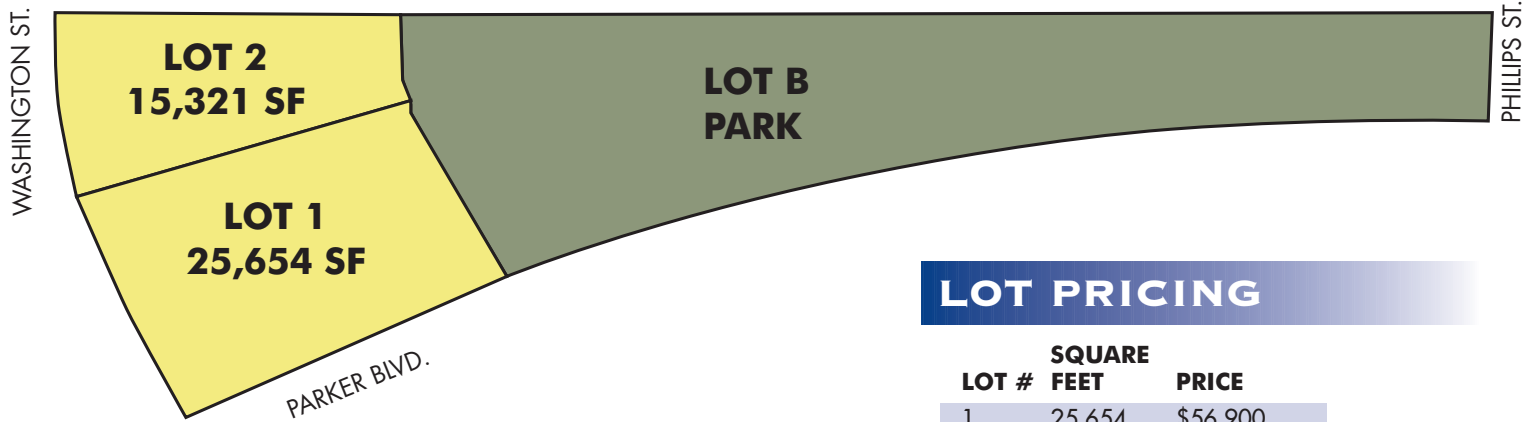
LOT #	SQUARE FEET	PRICE	DESCRIPTION	FRONT WIDTH AT SETBACK
16	9,960	\$46,900	Standard	Cul-de-sac Lot
17	11,498	\$46,900	Standard	65
18	11,455	\$46,900	Standard	Corner Lot
19	12,802	\$45,900	Standard	Corner Lot
20	14,133	\$45,900	Standard	Corner Lot
21	11,386	\$46,900	Standard	Corner Lot
22	13,433	\$45,900	Standard	65
23	13,433	\$45,900	Standard	65
24	13,433	\$45,900	Standard	65
25	13,433	\$45,900	Standard	65
26	13,433	\$45,900	Standard	65
27	30,248	\$46,900	Standard	Corner Lot
28	8,185	SOLD	Standard	65
29	8,293	\$46,900	Standard	65
30	13,494	\$45,900	Standard	Corner Lot

Prices are subject to change without notice.



KNAPP
PROPERTIES, INC.

LAKESIDE DEVELOPMENT PLAT 3



LOT PRICING

LOT #	SQUARE FEET	PRICE
1	25,654	\$56,900
2	15,321	\$51,900

Prices are subject to change without notice.

